

# CBR NETWORK

CBR Associates, Inc. 1415 Broad St. Durham, NC 27705

P: 919-286-1326  
F: 919-286-1329

March 2010

Volume 49

BrendaS@cbrassoc.com, KathyM@cbrassoc.com, AleshaC@cbrassoc.com, SteveB@cbrassoc.com Website: [www.cbrassociates.com](http://www.cbrassociates.com)

## Cleo's Corner



### Training Sessions via Go To Meeting

For our PRIVplus clients we have been scheduling Go To Meeting sessions for 1/2 hour to an hour and providing some training. Many clients have expressed how much this has helped them. As the saying goes, "you never know what it is that you don't know". We have a Go To Meeting account and it is not necessary for you to have Go To Meeting. You simply join a meeting that we host. We recommend that you call us from the computer you have PRIVplus loaded on and you must have access to the Internet. Then we are able to hook up and can run some reports and show you some features that you may have forgotten since training, or just overlooked when they were added during an update. If you are interested, please either email us or give us a call.

### Training in Raleigh/Durham, NC

Please note that CBR does provide a training class in Raleigh/Durham for PRIVplus. The class is always on a Thurs and Friday—9 a.m. to 4 p. on Thurs and 9– Noon on Friday. The cost of this class is \$500.00 for one or two people. If you have never had training, it would be great if you could attend. Our next Class is April 22 and 23rd.

### VISN Training for VA facilities

Brenda often goes to a training facility where a number of VA hospitals can come together for VISN wide training. This allows training of more people and for individuals who may be credentialing LIPS and Dependents. The cost is a flat \$2500.00. Please let us know if you wish to schedule one of these sessions.

### 2nd Copies of PRIVplus for VA facilities

A number of VA facilities have purchased a second license for PRIVplus to use for the Dependents. This allows the LIPS and Dependents to be totally separate. If you are interested in a second copy, contact Brenda at BrendaS@cbrassoc.com.

**NOTE:** This Newsletter and some past newsletters are on our CBR website— [www.CBRAssociates.com](http://www.CBRAssociates.com).

### Holiday Closing

We will be closed Good Friday (April 2) and Easter Monday (April 5).

### In this issue:

PRIV - How to have 1  
different signature  
blocks

QUALCAREplus - 2  
Close Open Cases  
& v6.1

RISK plus - 2  
ITO3 Trend Report

Technical Tips 3

### Special points of interest:

- **Holiday Closings**
- **Announcements**
- **Technical Tips**

## PRIVplus



● Within PRIVplus, please click on Help on the Main Menu and then About. If you are not running version 5.2.1 of PRIVplus, you are missing some new features. Please contact us regarding your update.

● Signature Block—there is a way to have a different signature block print based on login. This means

that there is a way to edit your letter and have it print Susie Q's signature block if she has her own login and print Molly B's if she logs in. Please email us for a handout if you are interested—or give us a call. It is just a matter of putting a condition within the letter.

● Physician Overview Area of PRIVplus—with the last update we included three new letters (Over 1,

Over 2 and Over 3). These letters are actually forms. We provided them to give you an example of things you may do in this area. Since it is a letter, you may edit it, add to and take from. You may also add things by either selecting fields from the drop down box or from another letter (in this same area) called Fields. If you print each letter for one person it will give you an idea of other uses.



# QUALCAREplus



## **Mass CLOSE all your OPEN Cases**

Our programming staff has created a separate executable (CloseOpenCases.exe) that will CLOSE all your OPEN cases in QUALCAREplus in mass creating a record at the Actions Taken TAB as follows:

Action Taken: Case Closed—CL  
Taken By: CBR (will be added to your Master List)  
Action Taken Dt: 02/02/2010 (date you execute the mass close)  
Comments: Mass Closure of Cases  
Occ Description TAB: CL-02/02/2010 CL and the date will appear in the upper right hand corner—this reflects the LAST ACTION TAKEN on the case.

Run the OP04 Open Cases report first (large time frame), then use this EXE to mass close all your OPEN cases. Go back and delete the CLOSED Action Taken if, in fact, the case is still open. Call or email Kathy (KathyM@cbrassoc.com) if you are interested in this feature. It works in both v5.0 and v6.1.

## **Shipping QUALCAREplus v6.1 Update**

### Features:

- Reports upgraded to Crystal v11 R2
- Access Database upgraded to Access2002 version
- New reports were added to v6.1 of QUALCAREplus to reflect the Category and Sub-Category of each occurrence screen (or indicator) on statistical reports to better enable you to report practitioner OPPE/FPPE data.
- New Report: UT16—List of Users
- New Report: MS05—Department Category Allocation of Good Report Card (all the occurrences as physician is tracked for but did not trigger)
- Category added as a field when creating new Security Group. This will enable other user (like your ICP) to access the program, enter infections and run their reports on infections.
- Rate Based Trend Reports (OT02 and OT04) were rebuilt to accurately reflect monthly and quarterly rates (matching the OS reports for the same time frame and conditions).
- Revised many reports to wrap the description of the occurrence (indicator) so the description is no longer truncated on the reports.
- Query tool now includes the Reviewer's Name from the Occurrences table

---

---

# RISKplus/RISKweb

## **IT03 report—Trends Yearly Comparison**

Use the IT03 report to look at a given month, compared to the previous month, compared to one year ago for that same month with a 13 month total AND a 13 month average. I ran the IT03 for June 2004 for Category = Falls, changed the name of my report to "Fall Trends Yearly Comparison" and have this report:

**Fall Trends Yearly Comparison**

IT03

02/11/10

Sort By:

Category	Sub Category	Incident Screen	06/04	05/04	06/03	13 Mnth Total	13 Mnth Avg
Fall	Fall	Fall from bed	5	3	2	38	2.9
Fall	Fall	Fall from chair	1	1	0	5	0.4
Fall	Fall	Found on floor	0	0	0	4	0.3
Fall	Fall	Fall while ambulating	1	0	0	5	0.4
Fall	Fall	Fall - other	0	0	0	1	0.1
Fall	Fall	Fall from table (exam table)	1	0	0	2	0.2
<b>Fall Totals</b>			<b>8</b>	<b>4</b>	<b>2</b>	<b>55</b>	<b>4.2</b>
<b>Grand Totals</b>			<b>8</b>	<b>4</b>	<b>2</b>	<b>55</b>	<b>4.2</b>

Change the sort to "Patient Type" keeping the Category = Falls condition and you will see totals for each of your types of patients (Inpatients, Outpatients, Residents, etc.).

## **RISKweb**

RISKplus/W version has been designed to replace the existing web tool RISKweb. Plans are to release RISKplus/W into BETA during the Summer of 2010. As a current client of the multi-user version of RISKplus, you can receive the new RISKplus/W version for no extra charge — all updates to the program are included in your annual license fee.

## Technical Tips

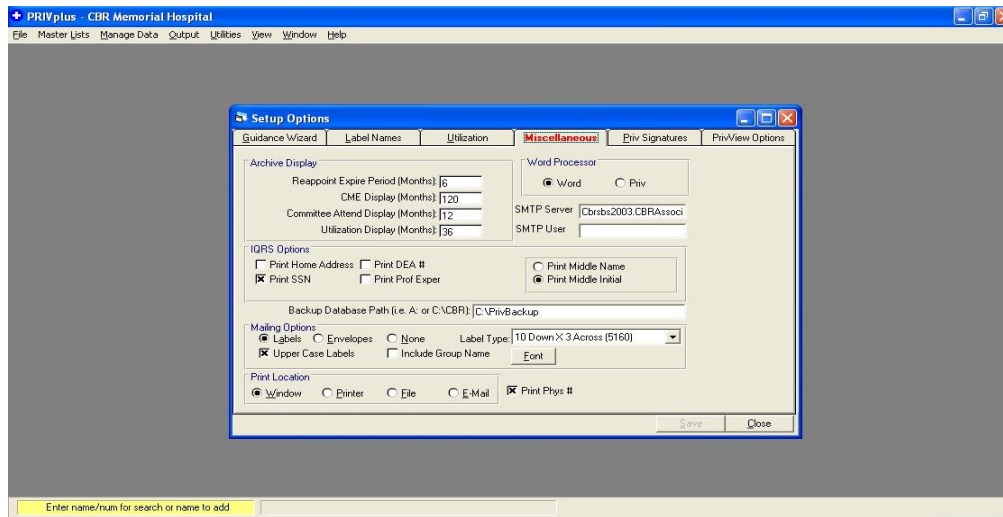


Are you backing up your PRIVplus data? We all know that stuff happens. Viruses, hardware failures, and just plain oops, I didn't really mean to do that. Having a well thought out and faithfully implemented backup strategy will save you a lot of grief and anxiety in the event that some unfortunate stuff happens. It really is not that difficult.

The first thing to consider is where your backup data files will reside. If you are running a network version of PRIVplus and the database is on a network file server maintained by your IT department then a logical place for the backup data files would be the hard drive on your local PC. You might want to verify with your IT department that the PRIVplus folder structure on the file server is included in their backup plan. You never can be too careful.

If you are running a single user version of PRIVplus you need to write backup data files to somewhere other than your local PC. If your PC is on your facilities network and your IT staff has provided you with a network drive that you save your documents to that would be a perfect location for your PRIVplus backup files. You can also write your backup files to a USB flash drive that you can remove from your PC when you leave for the day.

Once you have determined where you want your backup files to reside you must change the *Backup Database Path* on the miscellaneous tab of the Setup Options dialog box. From the main PRIVplus screen click on *File* then *Options* then select the *Miscellaneous* tab.



Now that you have your backup strategy in place don't skip that "Do you wish to backup your database?" option when you exit PRIVplus. Hopefully you will never need to recover your data from a backup but if you do you will be glad you have a current backup file to use for the recovery.

## Announcements



**Congratulations:** To Mr. Les Cook from the VA Medical Center in San Antonio who passed the CPCS exam!

**Congratulations:** Congrats to Ruth O'Dell who retires from the VAMC Ann Arbor in March. We have enjoyed working with her over the years and wish her many, many years of blissful retirement. She will be missed.

## Announcements & Suggestions

We would love to hear your announcements and suggestions for our next newsletter! Please use the space below to send us your news.

### Announcements:

---

---

### Suggestions:

---

---