

# CBR NETWORK

CBR Associates, Inc. 1415 Broad St. Durham, NC 27705

P: 919-286-1326  
F: 919-286-1329

December 2010

Volume 52

BrendaS@cbrassoc.com, KathyM@cbrassoc.com, AleshaC@cbrassoc.com, SteveB@cbrassoc.com Website: [www.cbrassociates.com](http://www.cbrassociates.com)

## Cleo's Corner



### Happy Holidays!!

We have all reached another milestone and 2010 is just about behind us. It is hard to believe that ten years ago we were worried about Y2K and now it is almost 2011. From all of us at CBR, we hope 2011 will be a wonderful year for you and bring you much joy and happiness. Take time to make new memories with those you love because time does go by so very fast. Speaking of holidays, training is the **best gift** you can give yourself.

### Upcoming Updates to PRIVplus

We really appreciate all the input we have received from many of you regarding ideas for updates to PRIVplus. Your opinion matters most! There are a number of reports, features, etc. coming down the pike, but there are two that I wanted to make you aware of specifically.

#1 In a manner similar to the way PRIVview works, you will be able to have a link on your website that shows the provider

directory DI5. There will be three links. One will bring the providers up in alpha order, one in department order, and one in specialty order. #2 You will be able to have a link on your webpage that allows individuals to sign in, give their name and address and then search for a provider. They will have an option to click a button to create a verification letter addressed back to themselves which will give them appointment information on that person, as it applies to the time they spent at your facility. You might say they will be able to "self-serve" this information eliminating you having to send out so many letters to inquiring facilities.

### VISN Training for VA facilities

Brenda often goes to a training facility where a number of VA Medical Centers may come together for VISN wide training. This allows training of more people and for individuals who may be credentialing LIPS and Dependents. The cost is a flat \$2,500.00. Please let us know if you wish to schedule one of these sessions. There are many things that you may not know that can save you **a lot** of time.

### 2nd Copies of PRIVplus for VA facilities

A number of VA facilities have purchased a second license for PRIVplus to use for the Dependents. If you are interested in a second copy, contact Brenda at BrendaS@cbrassoc.com.

### Holiday Closing

We will be closed December 24th-31st for the Holidays. CBR will re-open on Monday January 3rd. We will be checking for **EMERGENCY MESSAGES ONLY** on December 27th-30th.

### In this issue:

PRIV—Training Videos & Things to Try	1
QUALCAREplus- • Good Report Card • Expand Access	2
RISK plus- • Near Misses • Assaults	2
Technical Tips	3

### Special points of interest:

- Holiday Closings
- Announcements
- Technical Tips

## PRIVplus—a little this and that (email for handouts)



•Remember that we have training videos now. Some of you are unable to view them due to security settings but, please email us for the address and give it a try. Perhaps you can

forward them to your personal email and that will work.

•Quick things to try:

•Click on Output, Reports, License, LCI, Selection, Click on License type of DEA—at the bottom, click on Without License. Run it. If there are individuals on the report—Is it ok that they don't have a DEA—Or did you forget to put it in?

•Do the same for LII (liability insurance).

•Run AP2—Why would anyone be on that report?

•Run report BO4 to the window and then look at page 2. Did you know there was a graph?

•Run a report to the Window, the two sheets of paper in the upper right hand corner is the easiest way to export it. If you select excel as the format and then application—it opens in excel right before your eyes.



# QUALCAREplus



## Expand Access To QUALCAREplus For Other Departments

With the new v6.1 version, you can now give other departments or personnel access to the program to enter their occurrences, indicators, and run reports. By creating a security group that is married to a Category, you can limit what occurrences/cases those individuals see.

Only the Category level at this time is available for designating security to. For example:

Category = Infection Control & Surveillance Give your ICP access to the program to enter the infections, take actions, record notes, AND run reports ONLY for Category = Infection Control & Surveillance

Category = Core Measures Give your Core Measure Analyst access to QUALCAREplus and to the Core Measure category to enter ONLY the variances to the core measures (i.e. no aspirin on discharge)

Category = Emergency Services Give the ED PI coordinator access to enter variances to their indicators, record notes, take actions plus run their own reports for ED Indicators. Contact Kathy at [KathyM@cbrassoc.com](mailto:KathyM@cbrassoc.com) for more information on how this works.

## Physician Profile—Good Report Card

Don't forget to print the Good Report Card for a Physician at OPPE or FPPE time. Remember to change the name of the OS13 or OS13b from Physician Profile to OPPE Jan-Jun 2010 or Ongoing Professional Practice Evaluation for Jan-Jun 2010 and include the Good Report Card which now (in v6.1) delineates the Categories and Subcategories, as well as, the occurrence screens/indicators (see image on right).

If your OS13 or OS13b Physician Profiles does NOT print a good report card, go to File, Options and check Print Good Report Card (in upper right) and SAVE. To designate which Categories appear on the Good Report Card, edit each Category Code and click on the 'Set Dept' button. Each Department with a green check marks will have the screens built under this Category appear on the Good Report Card.

OPPE Jan-Dec 2010		
OS13	01/01/2010 thru 12/31/2010	11/19/10
Name:	Boyland, George	
Department:	SURC Surgery/GSUR General Surgery	
<u>Good Report Card</u>		
Occurrence screens this physician is screened for but has not had		
<u>Blood Usage Review</u>		
Generic		
Albumin - criteria not met		
FFP - criteria not met		
PRBC criteria not met		
Transfusion Reaction		
<u>Critical Care</u>		
Coronary Care Unit		
Inappropriate response to CCU		
Medical mismanagement - critical care		
<u>Infection Control</u>		
Infection Control		
Nosocomial Infection		
Pneumonia		
Ruled out nosocomial infection		
Sepsis		

## RISKplus/RISKweb

### Tracking Near Misses

Option 1: Add additional categories (subcategories and incident screens) that specify Near Miss. For example: Category = Near Miss—Medication Errors; Category = Near Miss—Falls; Category = Near Miss—Equipment, etc. Where the structure will be:  
Category = Near Miss - Fall  
Subcategory = Near Miss - Fall

Incident Screens = Near Miss - fall from bed; Near Miss - fall from chair; Near Miss - fall during transfer OR simply: Near Miss - Fall

**Advantage:** See both actual and near miss incidents together on the report / side by side. **Disadvantage:** Increased number of incident screens built into the program. Separate incident screens: Fall from bed and Fall from bed - near miss.

Option 2: Use a user-defined field. There are 4 user-defined fields. Change the label on one of them to "Actual/Potential" or "Near Miss" (Yes/No items in list) then run ANY report for either Actual or Potential (or for Near Miss = Yes). Not all reports print the actual user defined fields BUT 90% of the reports have these user-defined fields available as conditions for the reports through the SELECTION button at System Reports

**Advantage:** Can run any report and ask to include ONLY those incidents that are near misses (as the condition) without having to see the words 'near miss' in every incident screen description that was a near miss. Change title of report to reflect 'Near Misses' before running.

**Disadvantage:** Only a handful of reports print the actual User-Defined field information

### Tracking Assaults

Enter the Aggressor of the Assault as the Subject and record the victim(s) of the assault as a 'Person Involved'. At the Persons Involved TAB you are asked to identify the type of person as Physician (choose from Physician List), Allied Health (choose from Allied Health List), Employee (choose from Employees List) or Other - where you must manually enter the person's name. There is no sub-group to help delineate the kind of "other" person. For the victim, choose 'Other' as type of person but prefix the person's name with 'victim' as in "victim, Madison, Sally". When running the IP20 report: List of Incidents for People Involved, go to the Selection button and ask for incidents with "Other People Involved". You will be able to tell those victims easily by using a prefix.

### RISKplus/W (new web version)

To prepare for the new web version you can help clarify the main administrative level security group—SUPR. Not only is SUPR the name of a security group but you may still have SUPR as a user loginID. The SUPR term can often be confused with being connected to a Supervisor Security Group (supervisor vs dept managers level). To avoid confusion, edit the SUPR security group (in windows: Utilities, User, Risk Security Groups (web: Master Lists, Security Groups) and add a suffix, for example: SUPR-ADMIN or SUPR-Administrative to the description. The new web version, RISKplus/W, and the new update for RISKplus for Windows v6.1 5-19-10 includes a new report with a list of users and the security group they belong to.

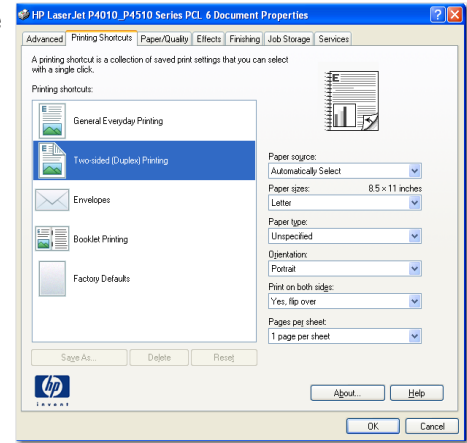
# Technical Tips



## Printing Letters Two-sided from PRIVplus

1 - After going to Output, Letters and selecting your letter, you will click on the File button at the bottom of the screen. You may then make any selection choices you wish, and click on the Print button at the bottom of the screen. You will then be prompted with a default name of the letter, or you may enter a name and then click on the Save button at the bottom of the screen. Once the letter has opened up in MS Word on your screen you will click on "SAVE AS" and save it to any location you wish. Once you have the letter saved, you may then find the letter, through windows explorer or by opening MS Word and opening the document. At this point you may print to the printer of your choice. To get it to print double sided you would click on print then you would click on properties. You would then choose the double sided print option and make sure you change the option at the bottom to 1 pages per sheet. See the screen below. You would then click on the OK button and print the letter. You will then have your letter print on front and back of the page, which will save you some PAPER!

2 - Another option to print two-sided is by clicking on the Start Button in the lower left hand corner on your computer then click on Printer and Faxes. Then you will right mouse click on your default printer and choose properties at the bottom. Then click on printer preferences at the bottom, it will then take you to your printing shortcuts screen where you will then choose the options to print Two-sided. See screen to right. You will then click the OK button and print your letter. The only thing that you have to remember is to change it back after you have completed two-sided printing. You would do this by following the steps we did before and just change it back to General everyday printing.



Note: Not all printers have this capability. Some printers require you to re-feed the paper back into your printer.

## Announcements

### Congratulations:

To Jill Edwards (QARISKplus at Alamance Regional) and her husband Ryan on the birth of their son, Ethan Burke in Oct 2010. Ethan has a sister, Ava Grace who is 4.

### Announcements & Suggestions

We would love to hear your announcements and suggestions for our next newsletter! Please use the space below to send us your news.

#### Announcements:

---

---

#### Suggestions:

---

---

